

Cross-Platform Data Replication For Data Marts

The Right Fit for the Toughest Jobs



HiT Software's DBMoto™ data replication product is the preferred solution for heterogeneous, real-time data replication and transformation requirements in an enterprise environment.

If your clients require real-time data in their analytic environment, and they need to source that data from production or 24x7 database systems without impacting them, HiT Software can help you!

A common solution is to mirror production data to a Data Mart for application or data warehouse access. However, you need to carefully manage how often that production server is tapped, and yet keep the Data Mart up-to-date. DBMoto's real-time data replication technology automatically handles data synchronization while reducing demand on database servers through minimal connection time, elegant replication grouping and an agnostic approach to databases, systems and platforms.

Whether data is located on Oracle, IBM, Microsoft, MySQL or any other major relational database, DBMoto can integrate it with a Data Mart for analytics, business intelligence or data warehouse access. DBMoto is the Change Data Capture solution of choice for fast, trouble-free and easy-to-maintain data integration projects.

With an efficient visual interface, intuitive wizards and easy-to-follow guides, DBMoto reduces time and effort to get data integration projects up and running quickly. DBMoto is in use today with BusinessObjects, MicroStrategy, Cognos and many other applications at global organizations. Let DBMoto implement your toughest data synchronization tasks quickly and easily, out of the box!

See how DBMoto can help you increase your data integration project velocity and client satisfaction!

CONTENTS

| | |
|----------------------|---|
| Overview | 1 |
| What People Say.. | 2 |
| Features & Benefits | 3 |
| Product Comparison | 4 |
| Replication Tutorial | 5 |
| Contact Us | 6 |

Cross-Platform Data Replication

WHAT PEOPLE ARE SAYING....



Stuart Bestbier,
Project Manager

Gordon Food Service Canada (GFS Canada) is a premier foodservice distributor in Canada. Their business intelligence project was implemented to serve the necessary data warehouse processes, tools and techniques to allow product item, vendor and customer margin, and profitability analysis for the sales and marketing business areas.

Using DBMoto, the project manages more than 50 tables, with up to 230 columns and 26 million records per table. Processing 100,000 primary business transactions per day, with many hundreds of thousands of supporting transactions every month, the system is in heavy use.

"With DBMoto's change data capture technology, our systems are minimally impacted as they are updated. DBMoto met our project requirements for a fast, reliable data replication technology for large volumes of data."



Luca Baldacci,
Information and
Communication
Technologies Manager

Irplast Group SPA, in Northern Italy, manages the production of printed adhesive tape and packaging systems used by some of the best known brands in consumer products.

Irplast's IBM i controls production and warehouse activities through requests from the automated warehouse system to move products around, extract raw and intermediate materials and control shuttle deliveries. DBMoto is used to synchronize data between IBM i and SQL Server - where a real-time reporting and business intelligence system is deployed.

Luca Baldacci explains, "Today, what makes a difference is customer support. And HiT Software support is both efficient and effective. I found that successive versions of DBMoto added important features, while maintaining a high level of reliability...I can say that I have never experienced better software support."



Joe Guerra,
Vice President

RapidDecision is a leading business intelligence package designed to access JD Edwards and other ERP data. Since JD Edwards' database was not designed with reporting and analysis in mind, RapidDecision was built to extract ERP data into analysis and reporting solutions. DBMoto's change data capture technology is embedded to extract IBM i data to other relational database formats.

"DBMoto is a high-speed, bi-directional data movement tool that is simple to install, simple to maintain and requires such a small development effort, it was a no-brainer for us to use as our primary vehicle for System i journal reading. When you look at the competitors across the board, DBMoto is a very reasonably priced and reliable data movement tool. DBMoto moves data faster with a much smaller footprint."

Cross-Platform Data Replication

The Right Fit for the Toughest Jobs



“Setting up the replications was a straightforward process. We could easily select the source, create the target, and define the mapping using the wizards, and, when we stumbled into some small difficulty, the HiT Technical Support team was very quick to respond and help overcome the problem.

“Members of the IT team were able to set up replications quickly and easily, even including filters to skip non-essential data, and thereby reduce replication size and increase efficiency. Above all, they were able to stay within budget for the project.”

—**Sandro Levati**,
 Director, Information
 Technology
**Ferrari Maserati North
 America, Inc.**

FEATURES & BENEFITS

Multi-modal
 Database Replication

- Refresh (snapshot)
- Mirroring (incremental)
- Synchronization (bi-directional)

Consulting Not
 Required!

- Download and try for free
- Easy to setup and implement
- The best technical support available!

Database Agnostic

- Compare our list of supported databases to other (more expensive) vendors!
- Transaction-log based replication for major databases
- Software can reside on source, target or separate system

Flexibility

- Multi-table replications
- Feel free to add your custom scripting, or use one of our free scripts
- DBMoto provides advanced conflict resolution for bi-directional synchronizations

Ease of Use

- DBMoto’s most popular feature is its easy-to-use interface that eliminates complicated replication programming and management
- Fully wizard-driven
- Completely non-intrusive to your databases
- Automatic mapping of disparate databases
- Provides replication grouping to minimize connection activity

Cross-Platform Data Replication

HIT SOFTWARE®

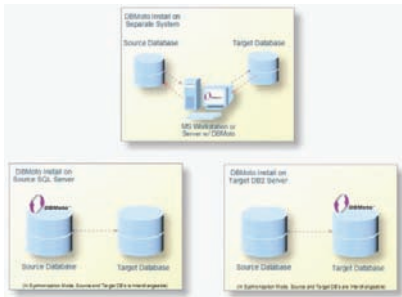
| PRODUCT COMPARISON | | DBMoto | IBM InfoSphere, formerly DataMirror |
|----------------------|--------------------------------------|-------------|--|
| Corporate Support | International sales offices | ✓ | ✓ |
| | International technical support | ✓ | ✓ |
| | Minimal call wait time | ✓ | |
| | Fast tech support response time | ✓ | |
| | Affordable | ✓ | |
| Replication Features | Row-level replication | ✓ | ✓ |
| | Field-level replication | ✓ | ✓ |
| | Reads transaction logs and journals | ✓ | ✓ |
| | Triggers supported | ✓ | ✓ |
| | Changed-data capture | ✓ | ✓ |
| | Multi-table replications | ✓ | ✓ |
| | Security | ✓ | ✓ |
| | Filtering | ✓ | ✓ |
| | Conflict Resolution | ✓ | ✓ |
| | Indexing | ✓ | ✓ |
| | Foreign Constraints | ✓ | ✓ |
| | Synchronous | ✓ | ✓ |
| | Asynchronous | ✓ | ✓ |
| | Load balancing | ✓ | ✓ |
| User-friendly | GUI-based | ✓ | ✓ |
| | Wizards | ✓ | ✓ |
| | Downloadable | ✓ | |
| | Management console | ✓ | ✓ |
| | No Data Loss - fully recoverable | ✓ | ✓ |
| | Configurable | ✓ | ✓ |
| | Non-invasive | ✓ | ✓ |
| | No consulting req'd to implement | ✓ | |
| | Easy prototype | ✓ | |
| | .NET and Linux platform support | ✓ | ✓ |
| | Log/Error-checking GUI | ✓ | ✓ |
| | Drag & drop mapping | ✓ | ✓ |
| | Custom scripting available in VB, C# | ✓ | ✓ |
| Databases Supported | IBM DB2 (i, z/OS, LUW) | ✓ log-based | ✓ |
| | Oracle | ✓ log-based | ✓ |
| | MS SQL Server | ✓ log-based | ✓ |
| | MySQL | ✓ log-based | |
| | Informix | ✓ | ✓ |
| | Sybase | ✓ | ✓ |
| | SQLBase | ✓ | |
| | PostgreSQL | ✓ | |
| | Ingres | ✓ | |
| | Solid | ✓ | ✓ |
| | Cloudscape | ✓ | ✓ |
| | MS Access | ✓ | ✓ |

Cross-Platform Data Replication

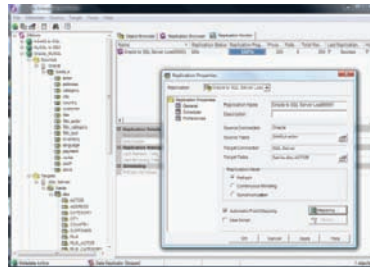
The Right Fit for the Toughest Jobs

DBMOTO REPLICATION GUIDE

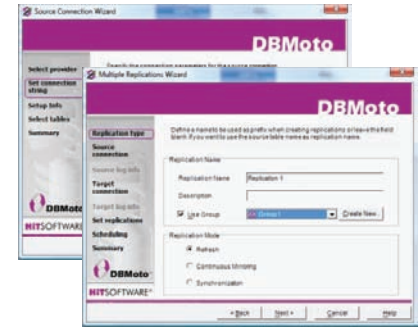
Setup



Flexible Installation Architecture
 Database Agnostic
 Very Low Overhead
 Automatic Recovery
 Non-Invasive Replication/Operation

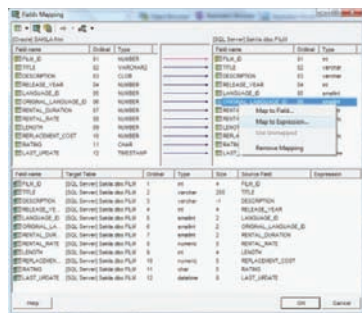


Management Console
 Easy Replication Prototyping
 Tabs and Windows for:
 • Data transformation
 • Management
 • Monitoring
 • Scripting

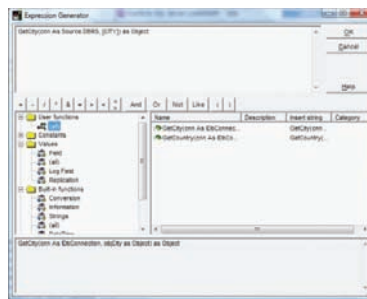


Quick Setup Wizards for:
 • Source/Target RDBMS Connections
 • Fast Replication Creation
 • Table Creation
 • Multi-table Replications

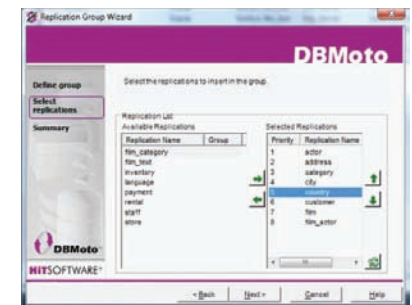
Design



Drag and Drop Custom Field Mapping
 Map to Fields and Expressions:
 • Constants
 • Values
 • Built-in Functions
 • Operators
 Modify Data Types and Relations
 Visual Expression Builder

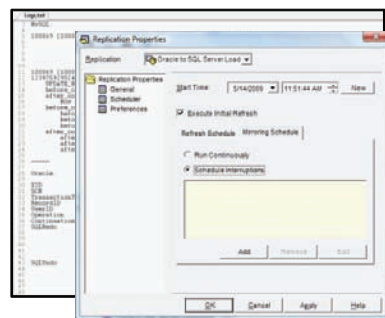


Replication Script Editor
 API Support
 Perform Data Transformations:
 • Joins
 • Data Type Conversions
 • Data Conversion, etc.

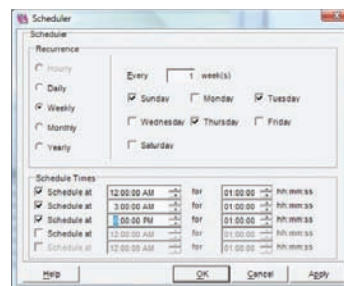


Replication Grouping:
 • Reduce TCP/IP & Log Connections
 • Set Replication Priority
 • Replication order by Foreign Keys
 • Reduce Source System Load

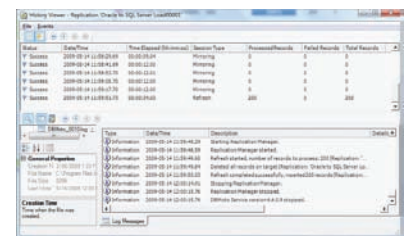
Manage



Initial Snapshot
 Real-time Replication
 Log-based Replication



Schedule Recurring Refresh (Snapshot)
 Schedule for Continuous Mirroring
 Schedule for Interruptions (DB Maintenance)
 Initiate on-Demand Refresh (Snapshot)



Extensive Log and Trace Options
 Flexible Log Options:
 • Write to Windows Event Log File or Database
 • Split Logs on Size, Days, and Log Truncation
 • Visual Log Viewing to:
 Easily Locate Replication Errors
 Organized for Viewing
 Color Coded Severity Flagging

Cross-Platform Data Replication

The Right Fit for the Toughest Jobs

Whether you are in the Americas, Asia or Europe, HiT Software is available for sales questions and technical support! Our website provides access to product downloads, product documentation and a full knowledge base of product help, facts and guidance.

For more than a decade, HiT Software products have been providing access to critical data, enabling data availability and offering programming-free data integration across enterprise systems. HiT Software's standards-based products perform real-time, bi-directional replication between all major databases; execute real-time, bi-directional transformations between XML and all major databases; and connect applications to IBM DB2 databases via .NET, OLE DB, ODBC and JDBC standards.

Founded in 1994 and based in San Jose, California, HiT Software is relied upon by thousands of organizations in virtually all vertical markets around the globe. Additional information is available at www.hitsw.com.

CONTACT US

HiT Software, Inc.
4040 Moorpark Avenue
Suite 221
San Jose, California 95117 USA

Phone 001-408-345-4001
Fax 001-408-345-4899
info@hitsw.com
www.hitsw.com

Global Sales Offices:
USA-California, Hong Kong, Chile, Italy, Germany